

NOTE 1: GRIND TEXTURED PEAKS FROM EXISTING PLASTERED SURFACE TO PROVIDE KEY FOR TRM WEATHERALL®

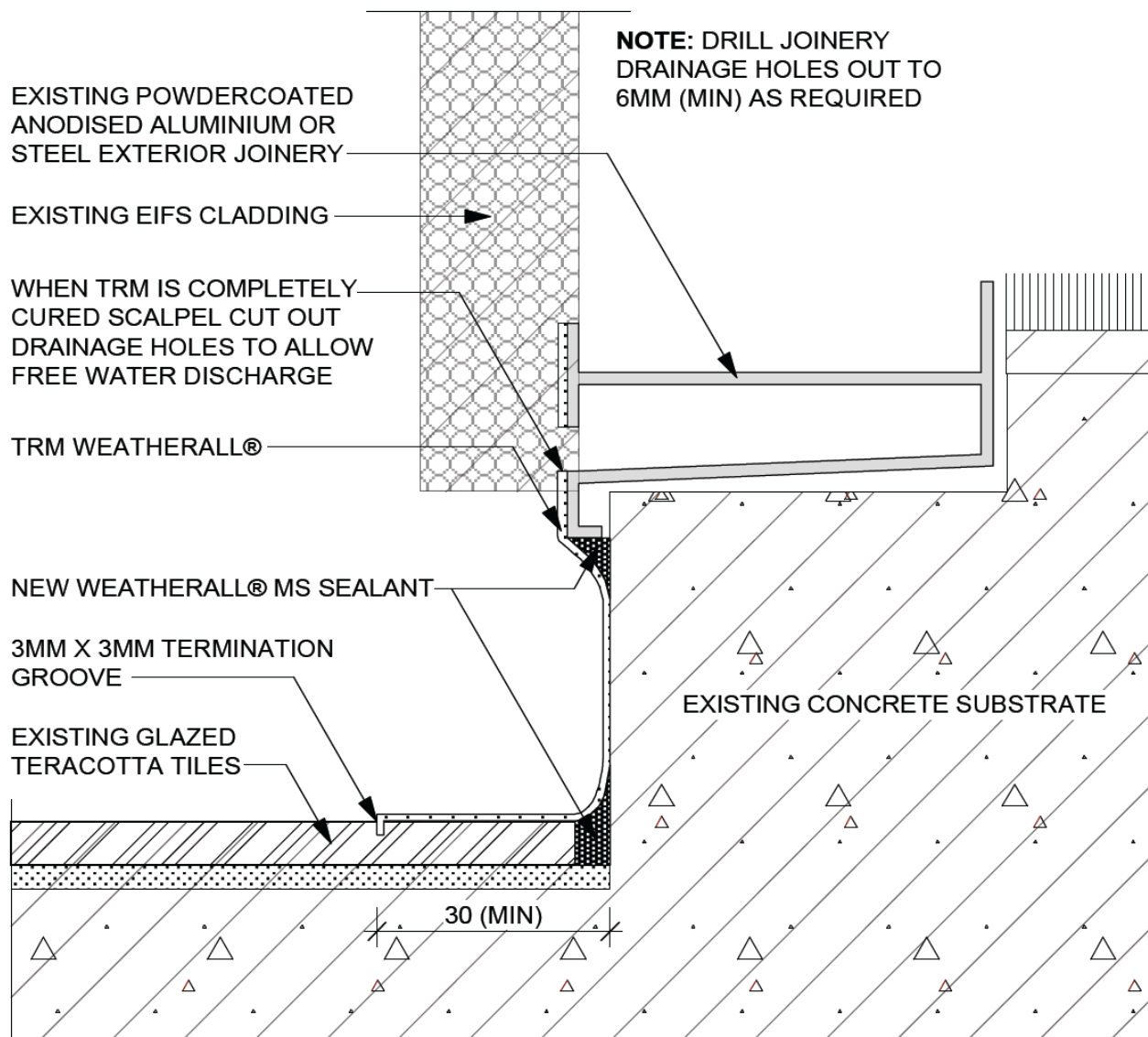
NOTE 2: SUBSTRATES WITH A REINFORCING MESH WITHIN A DEPTH OF 5MM FROM THE SURFACE OF THE SUBSTRATE ARE UNABLE TO ACCEPT A TRM TERMINATION GROOVE

Plan View

Scale 1:2

TRM WEATHERALL® TEXTILE REINFORCED MEMBRANE SYSTEM	TYPICAL FACE FIXED WINDOW	TRM-01
		DECEMBER 2015

The information contained in this detail is based on our experience and testing and represents the latest information available at the date of issue. This detail is intended for the use of design professionals and authorised users of TRM WeatherAll® products to assist in the development of specific project details to be used in conjunction with a TRM WeatherAll® specification. We reserve the right to alter or update information at any time without prior notice. It is the responsibility of a suitably qualified specifier, owner’s agent, and /or the project manager to insure that they have the current TRM WeatherAll® details and specifications.



Section

Scale 1:2

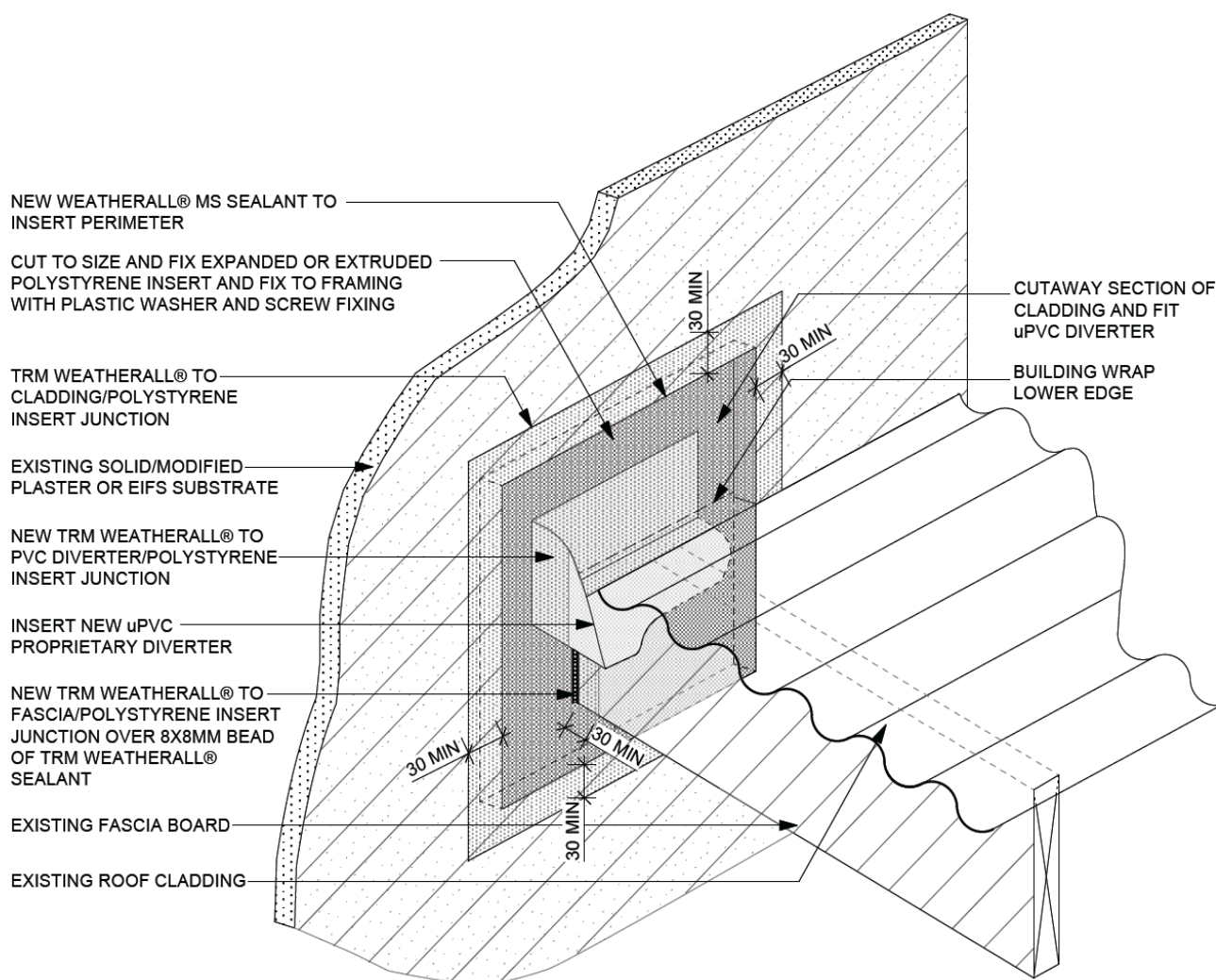
**TRM WEATHERALL®
TEXTILE REINFORCED
MEMBRANE SYSTEM**

TYPICAL THRESHOLD DETAIL

TRM-02

DECEMBER 2015

The information contained in this detail is based on our experience and testing and represents the latest information available at the date of issue. This detail is intended for the use of design professionals and authorised users of TRM WeatherAll® products to assist in the development of specific project details to be used in conjunction with a TRM WeatherAll® specification. We reserve the right to alter or update information at any time without prior notice. It is the responsibility of a suitably qualified specifier, owner's agent, and /or the project manager to insure that they have the current TRM WeatherAll® details and specifications.



NOTE 1: GRIND TEXTURED PEAKS FROM EXISTING PLASTERED SURFACE TO PROVIDE KEY FOR TRM WEATHERALL®

NOTE 2: SUBSTRATES WITH A REINFORCING MESH WITHIN A DEPTH OF 5MM FROM THE SURFACE OF THE SUBSTRATE ARE UNABLE TO ACCEPT A TRM TERMINATION GROOVE

Isometric

Not To Scale

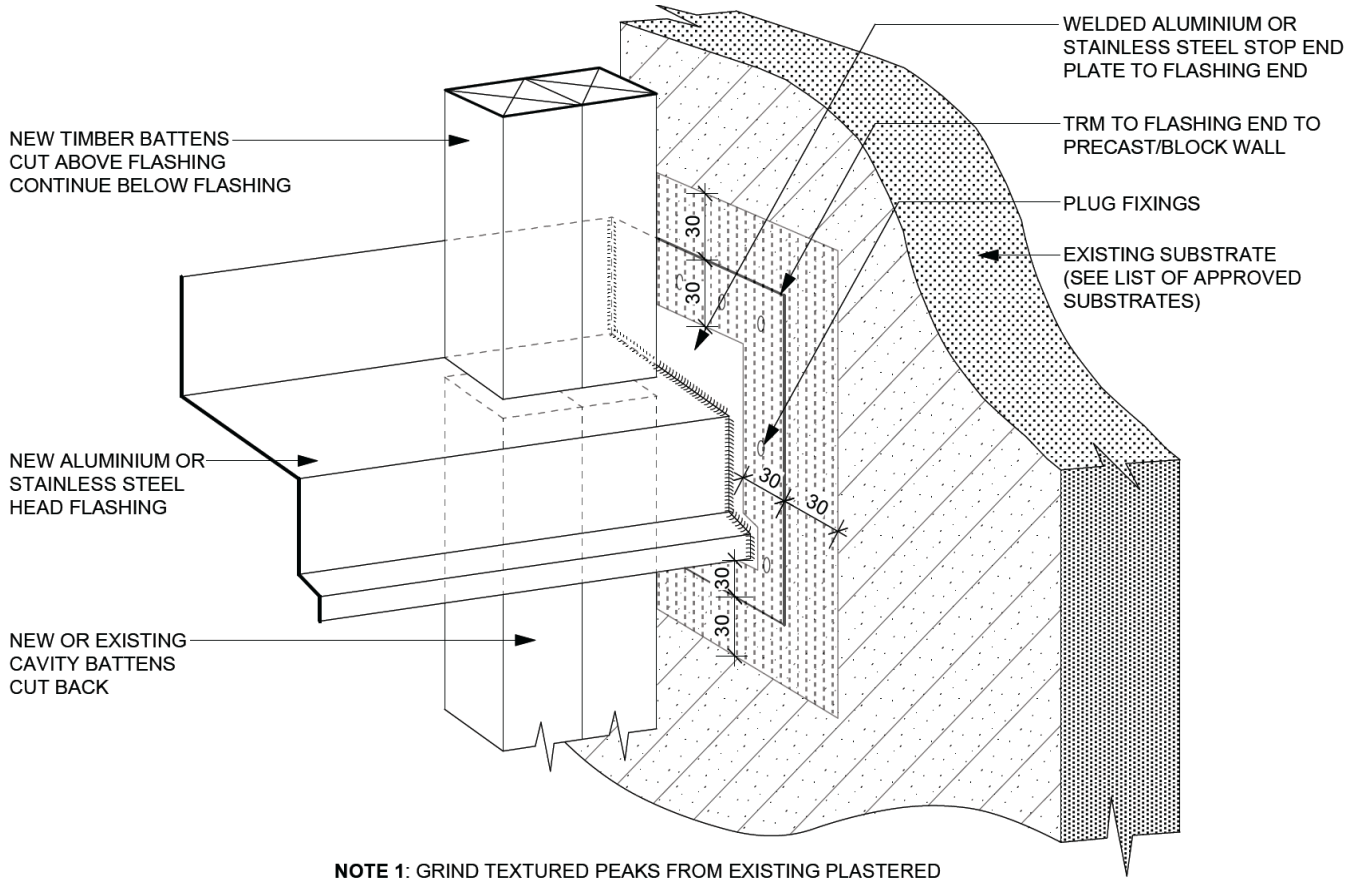
**TRM WEATHERALL®
TEXTILE REINFORCED
MEMBRANE SYSTEM**

**TYPICAL RETROFIT PROPRIETARY
uPVC DIVERTER**

TRM-03

DECEMBER 2015

The information contained in this detail is based on our experience and testing and represents the latest information available at the date of issue. This detail is intended for the use of design professionals and authorised users of TRM WeatherAll® products to assist in the development of specific project details to be used in conjunction with a TRM WeatherAll® specification. We reserve the right to alter or update information at any time without prior notice. It is the responsibility of a suitably qualified specifier, owner's agent, and /or the project manager to insure that they have the current TRM WeatherAll® details and specifications.



NOTE 1: GRIND TEXTURED PEAKS FROM EXISTING PLASTERED SURFACE TO PROVIDE KEY FOR TRM WEATHERALL®

NOTE 2: SUBSTRATES WITH A REINFORCING MESH WITHIN A DEPTH OF 5MM FROM THE SURFACE OF THE SUBSTRATE ARE UNABLE TO ACCEPT A TRM TERMINATION GROOVE

Isometric

Not to Scale

TRM WEATHERALL® TEXTILE REINFORCED MEMBRANE SYSTEM	TYPICAL HEAD FLASHING TO PRECAST WALL INTERSECTION	TRM-04
		DECEMBER 2015

The information contained in this detail is based on our experience and testing and represents the latest information available at the date of issue. This detail is intended for the use of design professionals and authorised users of TRM WeatherAll® products to assist in the development of specific project details to be used in conjunction with a TRM WeatherAll® specification. We reserve the right to alter or update information at any time without prior notice. It is the responsibility of a suitably qualified specifier, owner’s agent, and /or the project manager to insure that they have the current TRM WeatherAll® details and specifications.

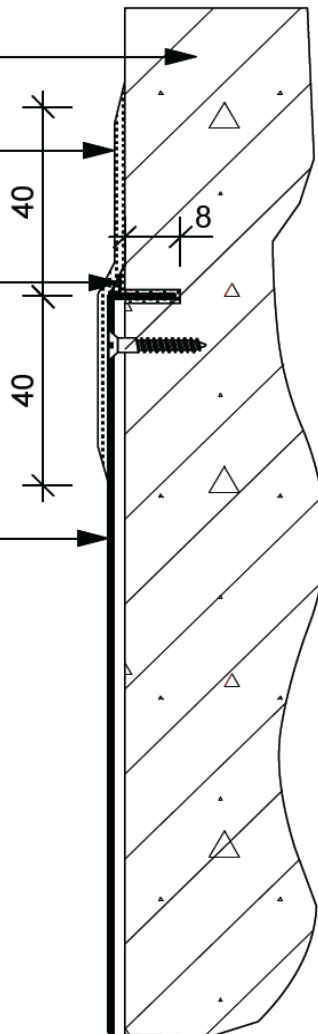
EXISTING SUBSTRATE
(SEE LIST OF APPROVED
SUBSTRATES)

NEW TRM WEATHERALL®
TO FLASHING/SUBSTRATE
JUNCTION

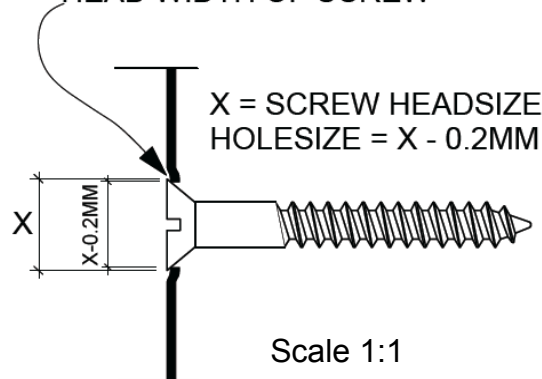
NEW WEATHERALL®
MS SEALANT

1.2MM (MIN) STAINLESS
STEEL APRON FLASHING
CUT INTO 10MM CHASE IN
WALL OR PRESS BREAK
FOLDED AGAINST
SUBSTRATE

Scale 1:2



FOR ALL STAINLESS STEEL
FIXINGS THROUGH STAINLESS
STEEL FLASHINGS WHERE TRM
WEATHERALL® IS TO BE
APPLIED DRILL UNDERSIZED
HOLE 0.2MM SMALLER THAN
HEAD WIDTH OF SCREW



NOTE 1: GRIND TEXTURED PEAKS FROM EXISTING PLASTERED
SURFACE TO PROVIDE KEY FOR TRM WEATHERALL®

NOTE 2: SUBSTRATES WITH A REINFORCING MESH WITHIN A DEPTH
OF 5MM FROM THE SURFACE OF THE SUBSTRATE ARE
UNABLE TO ACCEPT A TRM TERMINATION GROOVE

Section

TRM WEATHERALL®
TEXTILE REINFORCED
MEMBRANE SYSTEM

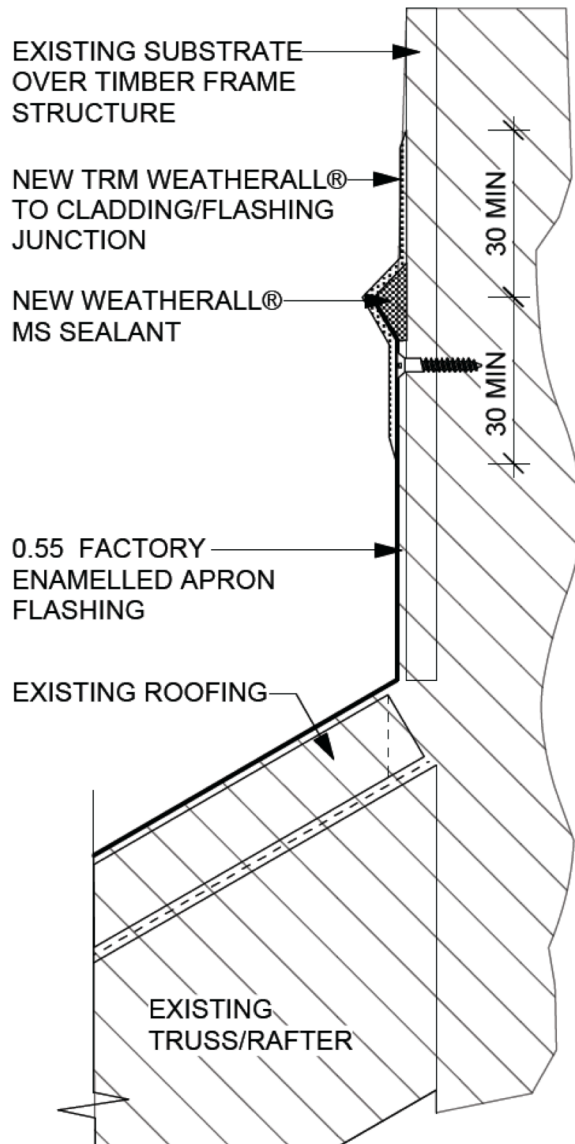
**TYPICAL TRM TO FACE MOUNTED
STAINLESS STEEL FLASHING**

TRM-05

DECEMBER 2015

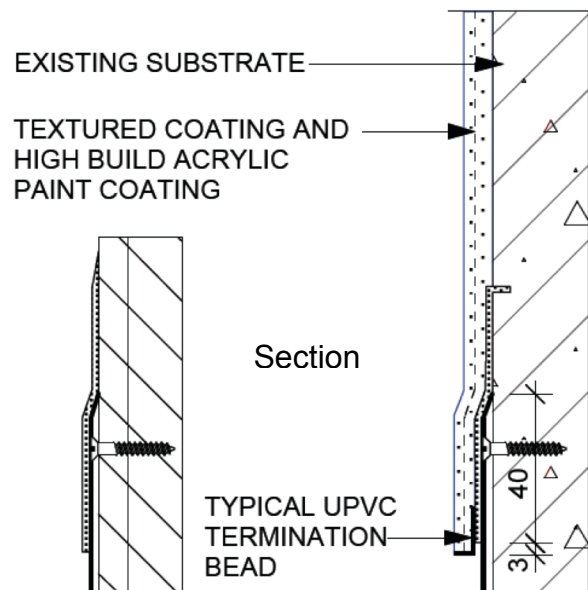
The information contained in this detail is based on our experience and testing and represents the latest information available at the date of issue. This detail is intended for the use of design professionals and authorised users of TRM WeatherAll® products to assist in the development of specific project details to be used in conjunction with a TRM WeatherAll® specification. We reserve the right to alter or update information at any time without prior notice. It is the responsibility of a suitably qualified specifier, owner's agent, and /or the project manager to insure that they have the current TRM WeatherAll® details and specifications.

Scale 1:2



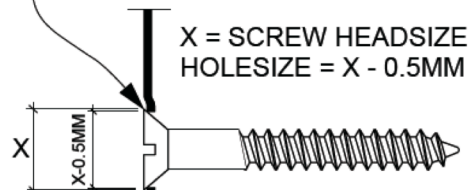
Section

Scale 1:2



ALTERNATIVE SOLUTIONS

FOR ALL STAINLESS STEEL FIXINGS THROUGH COLORSTEEL FLASHINGS WHERE TRM WEATHERALL® IS TO BE APPLIED DRILL UNDERSIZED HOLE 0.5MM SMALLER THAN HEAD WIDTH OF SCREW



Scale 1:1

**TRM WEATHERALL®
TEXTILE REINFORCED
MEMBRANE SYSTEM**

TYPICAL FACE MOUNTED FACTORY ENAMELLED METAL FLASHING

TRM-06

DECEMBER 2015

The information contained in this detail is based on our experience and testing and represents the latest information available at the date of issue. This detail is intended for the use of design professionals and authorised users of TRM WeatherAll® products to assist in the development of specific project details to be used in conjunction with a TRM WeatherAll® specification. We reserve the right to alter or update information at any time without prior notice. It is the responsibility of a suitably qualified specifier, owner's agent, and /or the project manager to insure that they have the current TRM WeatherAll® details and specifications.

NEW TEXTURED COATING AND HIGH BUILD ACRYLIC PAINT COATING

NEW TRM WEATHERALL®

NEW BEAD OF WEATHERALL® MS SEALANT

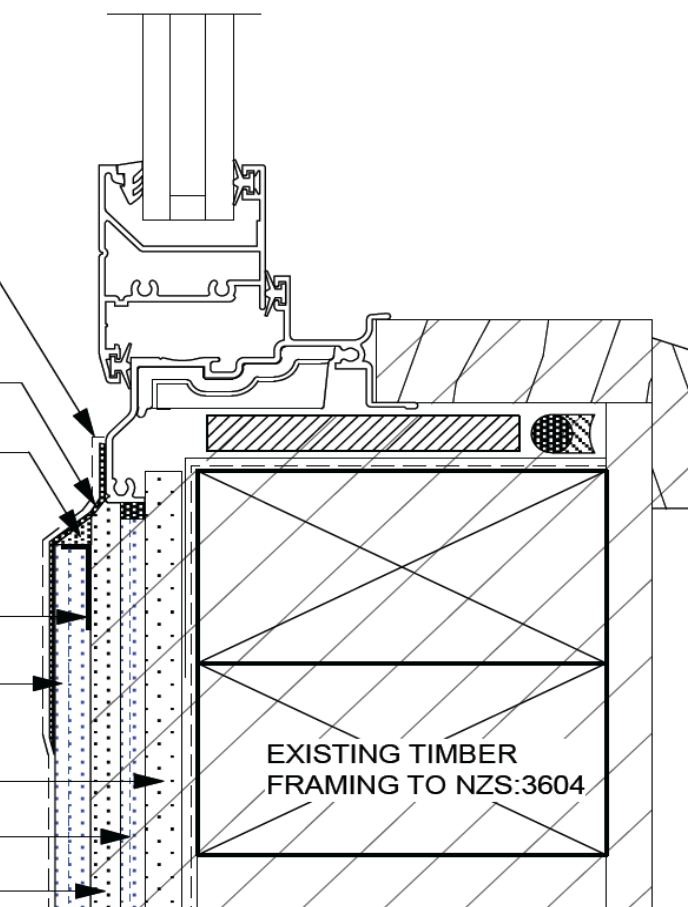
NEW PROPRIETARY PVC STOP BEAD

NEW LAYER OF TEXTURED PLASTER COATING

EXISTING FIBRE CEMENT SHEET

EXISTING BASE PLASTER

EXISTING PLASTER



NOTE 1: GRIND TEXTURED PEAKS FROM EXISTING PLASTERED SURFACE TO PROVIDE KEY FOR TRM WEATHERALL®

NOTE 2: SUBSTRATES WITH A REINFORCING MESH WITHIN A DEPTH OF 5MM FROM THE SURFACE OF THE SUBSTRATE ARE UNABLE TO ACCEPT A TRM TERMINATION GROOVE

Section

Scale 1:2

**TRM WEATHERALL®
TEXTILE REINFORCED
MEMBRANE SYSTEM**

**TYPICAL REMEDIAL SEALING OF
ALUMINIUM WINDOW FRAME &
OVERPLASTERING OF EXISTING
PLASTER**

TRM-07

DECEMBER 2015

The information contained in this detail is based on our experience and testing and represents the latest information available at the date of issue. This detail is intended for the use of design professionals and authorised users of TRM WeatherAll® products to assist in the development of specific project details to be used in conjunction with a TRM WeatherAll® specification. We reserve the right to alter or update information at any time without prior notice. It is the responsibility of a suitably qualified specifier, owner's agent, and /or the project manager to insure that they have the current TRM WeatherAll® details and specifications.

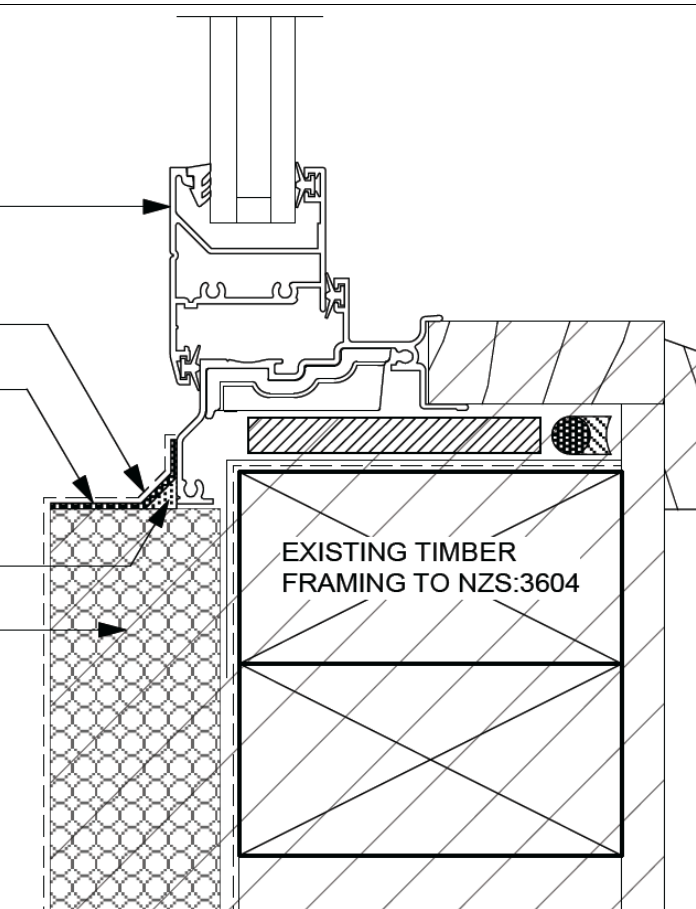
POWDERCOATED ANODISED
ALUMINIUM/STEEL WINDOW

NEW TEXTURED COATING AND HIGH
BUILD ACRYLIC PAINT COATING

NEW TRM WEATHERALL®

NEW WEATHERALL® MS SEALANT

EXISTING SUBSTRATE



NOTE 1: GRIND TEXTURED PEAKS FROM EXISTING PLASTERED
SURFACE TO PROVIDE KEY FOR TRM WEATHERALL®

NOTE 2: SUBSTRATES WITH A REINFORCING MESH WITHIN A DEPTH
OF 5MM FROM THE SURFACE OF THE SUBSTRATE ARE
UNABLE TO ACCEPT A TRM TERMINATION GROOVE

Section

Scale 1:2

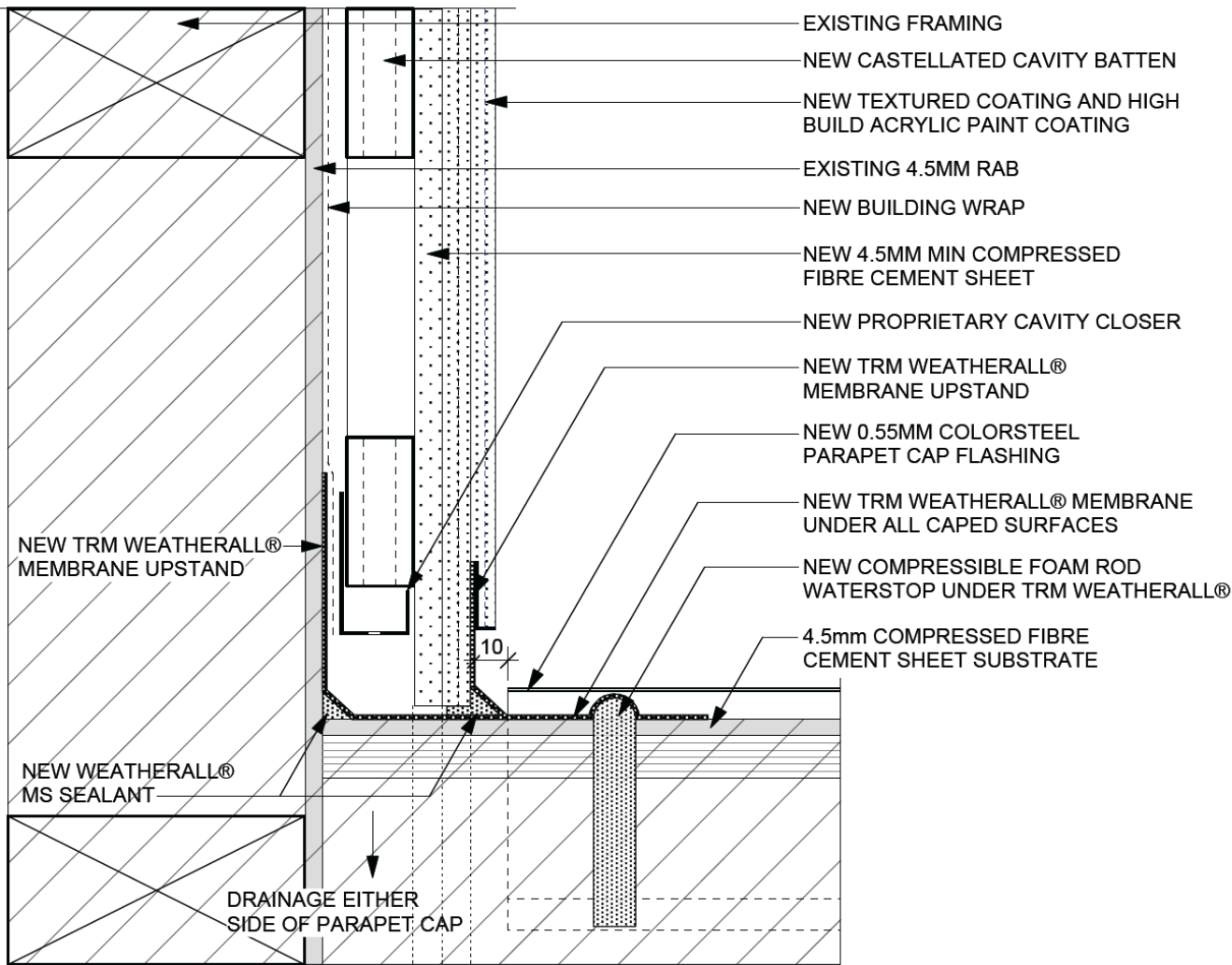
**TRM WEATHERALL®
TEXTILE REINFORCED
MEMBRANE SYSTEM**

**TYPICAL RECESSED WINDOW
JAMB AND SILL DETAIL**

TRM-09

December 2015

The information contained in this detail is based on our experience and testing and represents the latest information available at the date of issue. This detail is intended for the use of design professionals and authorised users of TRM WeatherAll® products to assist in the development of specific project details to be used in conjunction with a TRM WeatherAll® specification. We reserve the right to alter or update information at any time without prior notice. It is the responsibility of a suitably qualified specifier, owner's agent, and /or the project manager to insure that they have the current TRM WeatherAll® details and specifications.



NOTE 1: SUBSTRATES WITH REINFORCING MESH WITHIN 5MM OF THE SUBSTRATE SURFACE ARE UNABLE TO ACCEPT A TRM TERMINATION GROOVE

Section

Scale 1:2

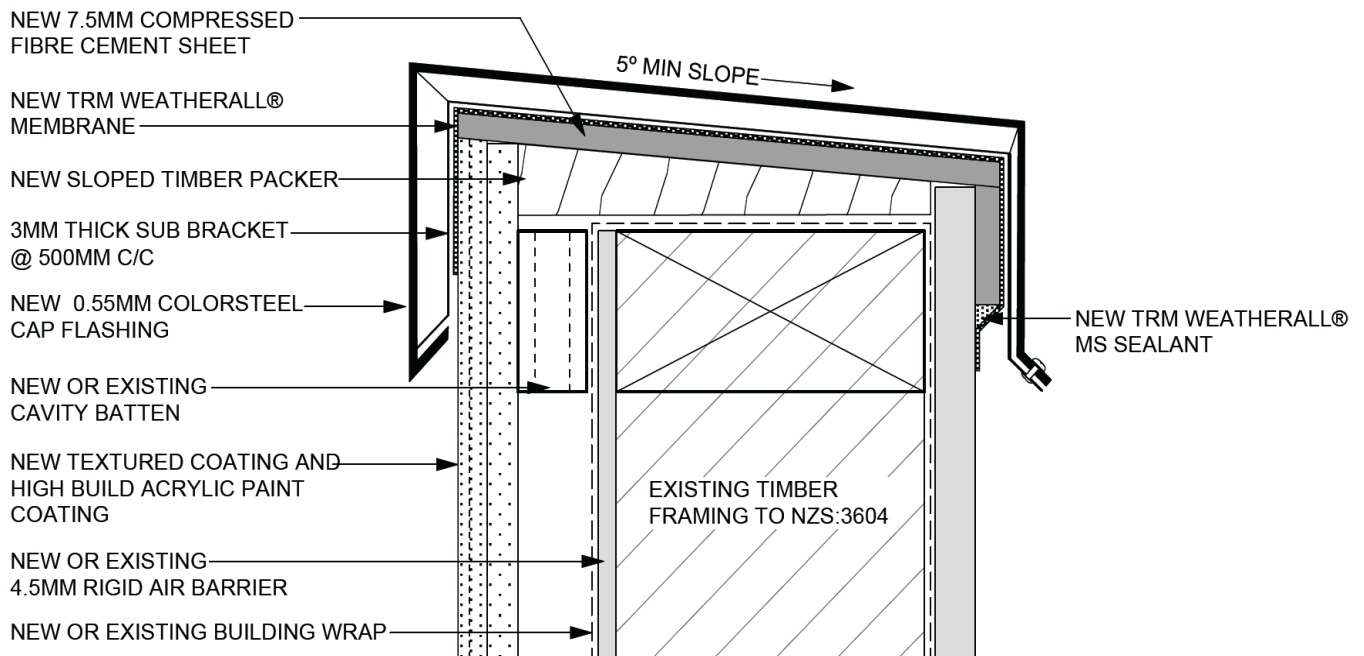
**TRM WEATHERALL®
TEXTILE REINFORCED
MEMBRANE SYSTEM**

**TYPICAL PARAPET TO PORTICO
TO MAIN DWELLING JUNCTION**

TRM-10

DECEMBER 2015

The information contained in this detail is based on our experience and testing and represents the latest information available at the date of issue. This detail is intended for the use of design professionals and authorised users of TRM WeatherAll® products to assist in the development of specific project details to be used in conjunction with a TRM WeatherAll® specification. We reserve the right to alter or update information at any time without prior notice. It is the responsibility of a suitably qualified specifier, owner's agent, and /or the project manager to insure that they have the current TRM WeatherAll® details and specifications.



NOTE 1: SUBSTRATES WITH REINFORCING MESH WITHIN 5MM OF THE SUBSTRATE SURFACE ARE UNABLE TO ACCEPT A TRM TERMINATION GROOVE

Section

Scale 1:2

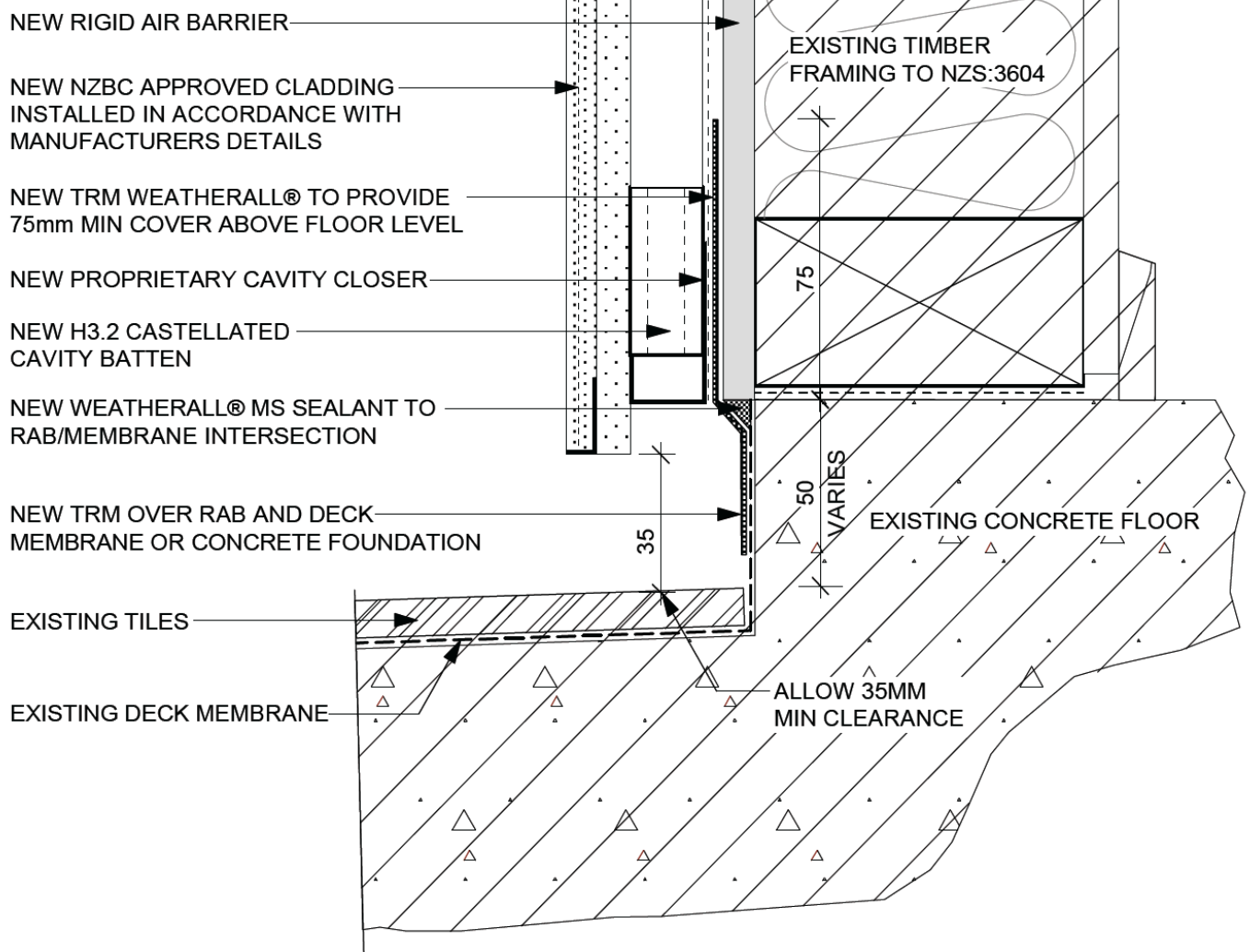
**TRM WEATHERALL®
TEXTILE REINFORCED
MEMBRANE SYSTEM**

**TYPICAL FIBRE CEMENT PARAPET
CAP**

TRM-11

DECEMBER 2015

The information contained in this detail is based on our experience and testing and represents the latest information available at the date of issue. This detail is intended for the use of design professionals and authorised users of TRM WeatherAll® products to assist in the development of specific project details to be used in conjunction with a TRM WeatherAll® specification. We reserve the right to alter or update information at any time without prior notice. It is the responsibility of a suitably qualified specifier, owner's agent, and /or the project manager to insure that they have the current TRM WeatherAll® details and specifications.



NOTE 1: SUBSTRATES WITH REINFORCING MESH WITHIN 5MM OF THE SUBSTRATE SURFACE ARE UNABLE TO ACCEPT A TRM TERMINATION GROOVE

Section

Scale 1:2

**TRM WEATHERALL®
TEXTILE REINFORCED
MEMBRANE SYSTEM**

**TYPICAL DECK MEMBRANE
RAB INTERSECTION**

TRM-12

DECEMBER 2015

The information contained in this detail is based on our experience and testing and represents the latest information available at the date of issue. This detail is intended for the use of design professionals and authorised users of TRM WeatherAll® products to assist in the development of specific project details to be used in conjunction with a TRM WeatherAll® specification. We reserve the right to alter or update information at any time without prior notice. It is the responsibility of a suitably qualified specifier, owner's agent, and /or the project manager to insure that they have the current TRM WeatherAll® details and specifications.

OPTIONAL: TOP EDGE OF APRON FLASHING
FOLDED INTO GROOVE IN CLADDING OR
SURFACE FIXED

1.2MM FACE MOUNTED STAINLESS
STEEL/FACTORY ENAMELLED
METAL FLASHING INTO 10MM
CHASE IN WALL FIXED WITH
STAINLESS STEEL SCREWS OR
PEEL RIVETS

EXISTING SUBSTRATE
(SEE LIST OF APPROVED
SUBSTRATES)

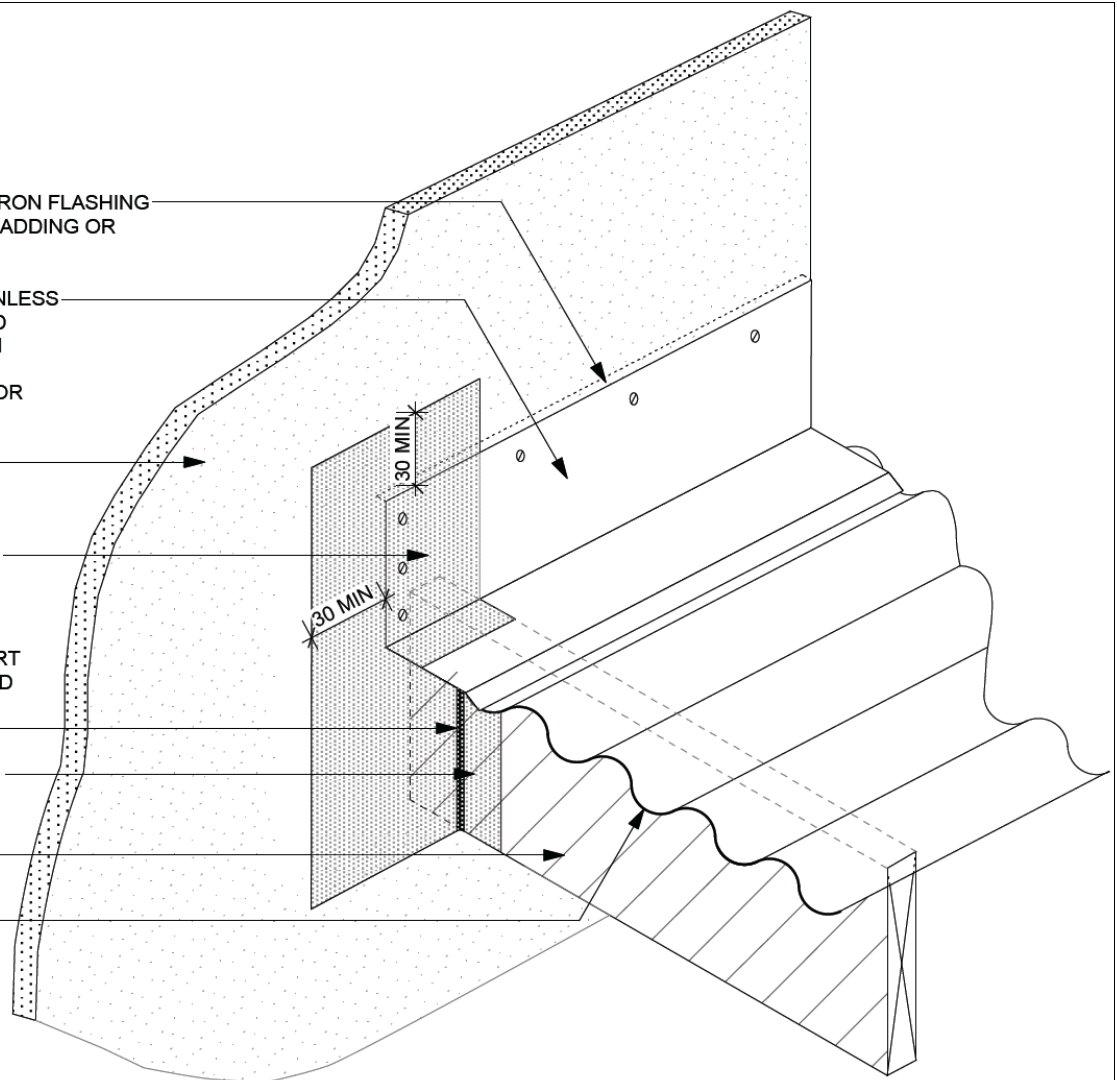
NEW TRM WEATHERALL® TO
APRON/WALL JUNCTION

NEW TRM WEATHERALL® TO
FASCIA/POLYSTYRENE INSERT
JUNCTION OVER 8X8MM BEAD
OF TRM WEATHERALL®
SEALANT

NEW TRM WEATHERALL® TO
FASCIA/WALL JUNCTION

EXISTING TIMBER FASCIA
BOARD

EXISTING ROOF CLADDING



NOTE 1: GRIND TEXTURED PEAKS FROM EXISTING PLASTERED
SURFACE TO PROVIDE KEY FOR TRM WEATHERALL®

NOTE 2: SUBSTRATES WITH A REINFORCING MESH WITHIN A DEPTH
OF 5MM FROM THE SURFACE OF THE SUBSTRATE ARE
UNABLE TO ACCEPT A TRM TERMINATION GROOVE

Isometric

Not to Scale

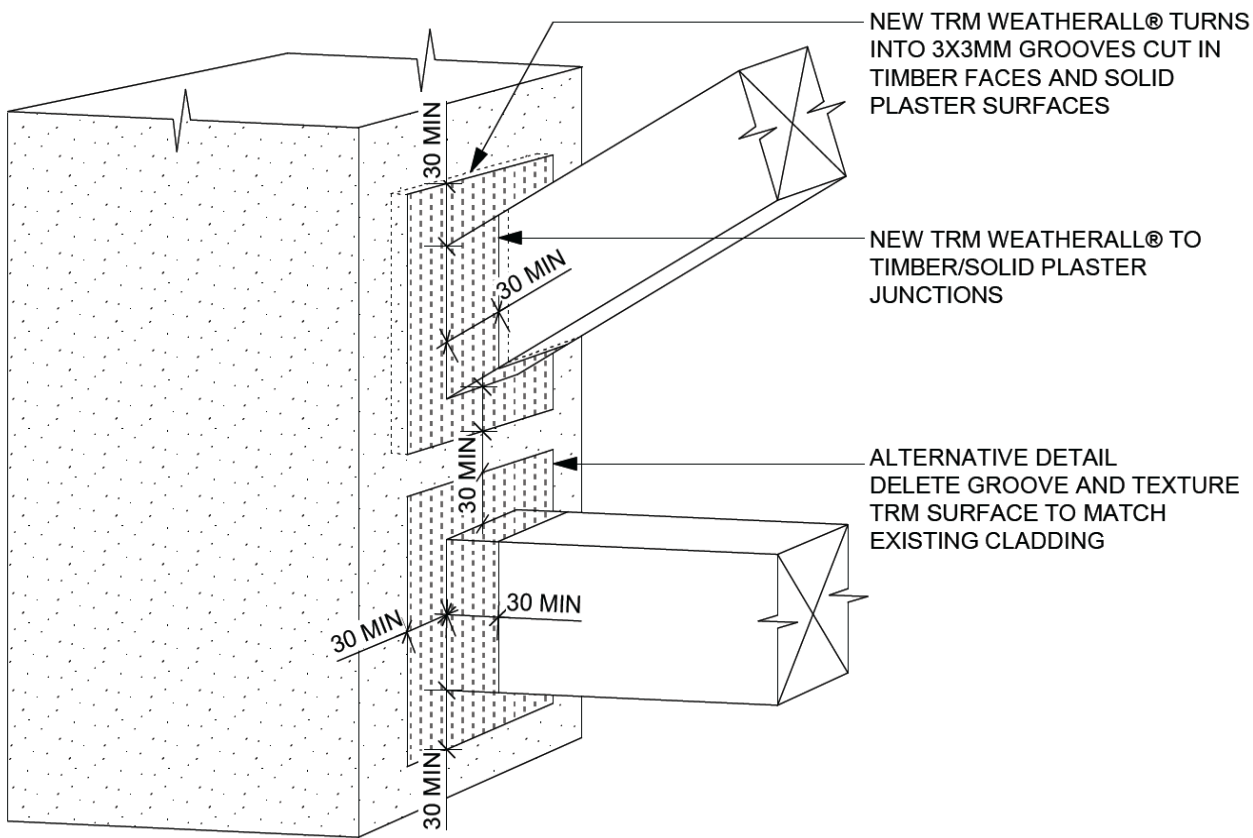
**TRM WEATHERALL®
TEXTILE REINFORCED
MEMBRANE SYSTEM**

**TYPICAL TIMBER FASCIA TO
SOLID PLASTER JUNCTION**

TRM-13

DECEMBER 2015

The information contained in this detail is based on our experience and testing and represents the latest information available at the date of issue. This detail is intended for the use of design professionals and authorised users of TRM WeatherAll® products to assist in the development of specific project details to be used in conjunction with a TRM WeatherAll® specification. We reserve the right to alter or update information at any time without prior notice. It is the responsibility of a suitably qualified specifier, owner's agent, and /or the project manager to insure that they have the current TRM WeatherAll® details and specifications.



NOTE 1: GRIND TEXTURED PEAKS FROM EXISTING PLASTERED SURFACE TO PROVIDE KEY FOR TRM WEATHERALL®

NOTE 2: SUBSTRATES WITH A REINFORCING MESH WITHIN A DEPTH OF 5MM FROM THE SURFACE OF THE SUBSTRATE ARE UNABLE TO ACCEPT A TRM TERMINATION GROOVE

Isometric

Not to Scale

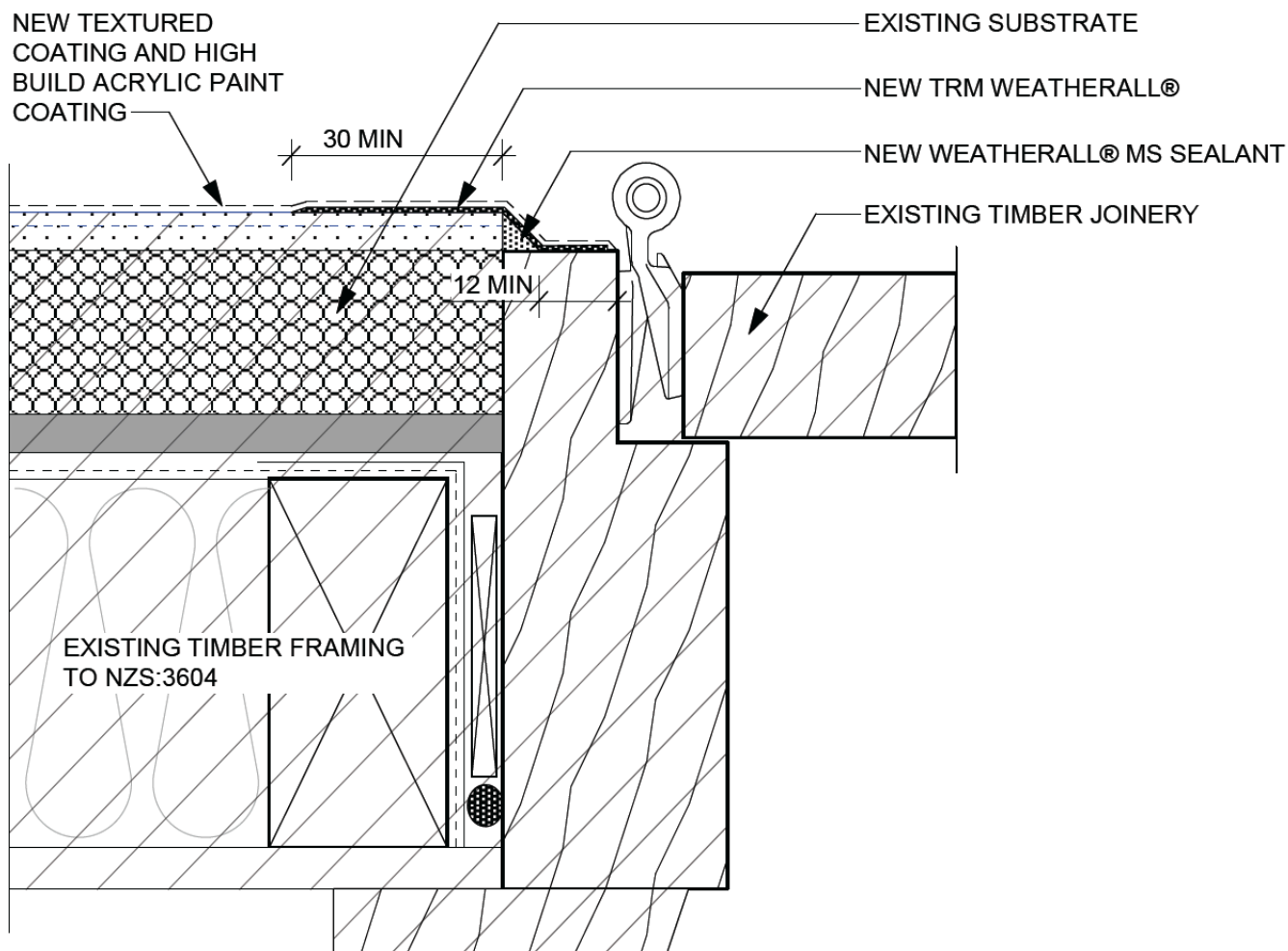
**TRM WEATHERALL®
TEXTILE REINFORCED
MEMBRANE SYSTEM**

**TYPICAL PENETRATION INTO SOLID
PLASTER**

TRM-14

DECEMBER 2015

The information contained in this detail is based on our experience and testing and represents the latest information available at the date of issue. This detail is intended for the use of design professionals and authorised users of TRM WeatherAll® products to assist in the development of specific project details to be used in conjunction with a TRM WeatherAll® specification. We reserve the right to alter or update information at any time without prior notice. It is the responsibility of a suitably qualified specifier, owner's agent, and /or the project manager to insure that they have the current TRM WeatherAll® details and specifications.



NOTE 1: GRIND TEXTURED PEAKS FROM EXISTING PLASTERED SURFACE TO PROVIDE KEY FOR TRM WEATHERALL®

NOTE 2: SUBSTRATES WITH A REINFORCING MESH WITHIN A DEPTH OF 5MM FROM THE SURFACE OF THE SUBSTRATE ARE UNABLE TO ACCEPT A TRM TERMINATION GROOVE

Section

Scale 1:2

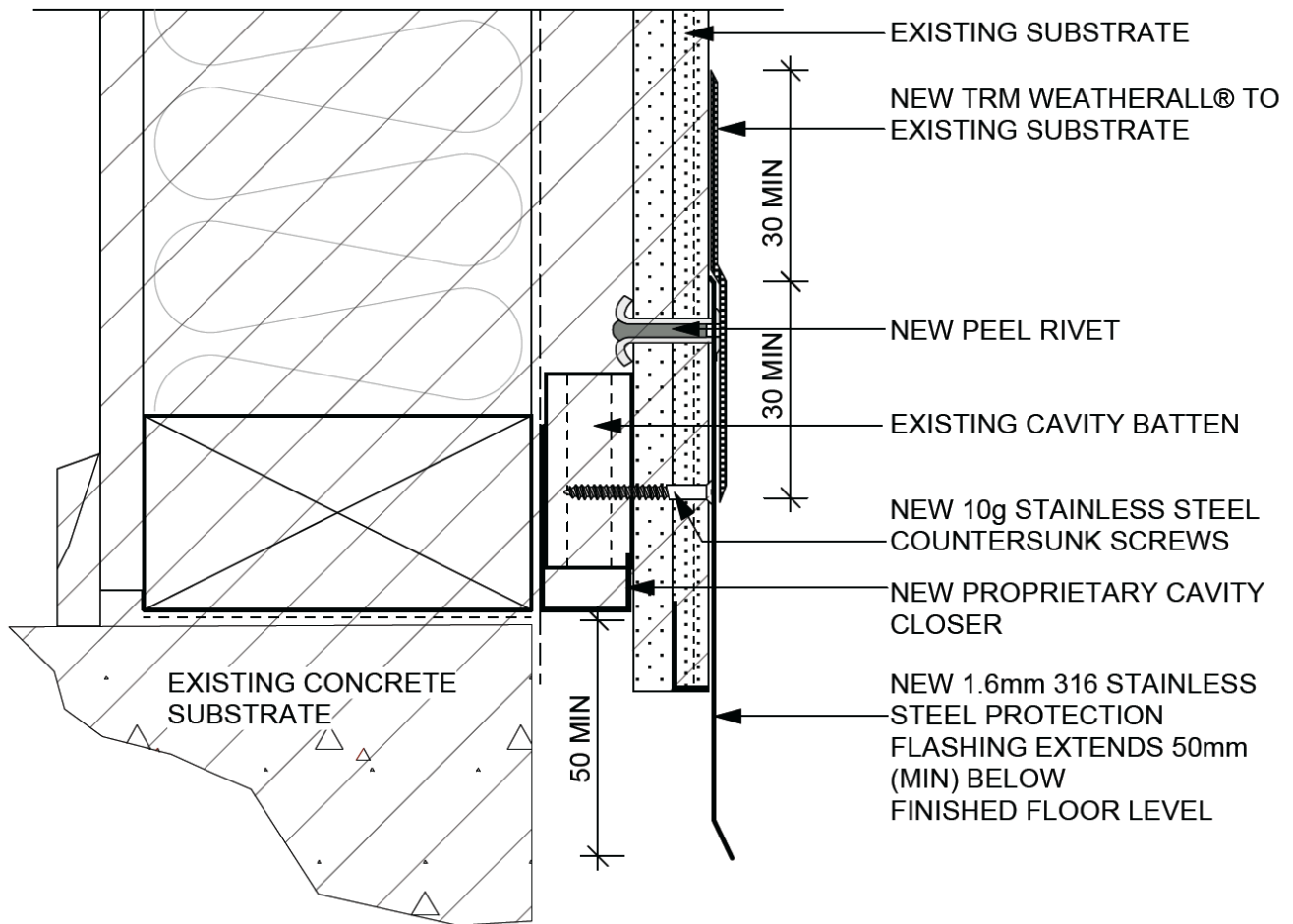
**TRM WEATHERALL®
TEXTILE REINFORCED
MEMBRANE SYSTEM**

**TYPICAL SOLID PLASTER TO
TIMBER JOINERY**

TRM-15

DECEMBER 2015

The information contained in this detail is based on our experience and testing and represents the latest information available at the date of issue. This detail is intended for the use of design professionals and authorised users of TRM WeatherAll® products to assist in the development of specific project details to be used in conjunction with a TRM WeatherAll® specification. We reserve the right to alter or update information at any time without prior notice. It is the responsibility of a suitably qualified specifier, owner's agent, and /or the project manager to insure that they have the current TRM WeatherAll® details and specifications.



NOTE 1: GRIND TEXTURED PEAKS FROM EXISTING PLASTERED SURFACE TO PROVIDE KEY FOR TRM WEATHERALL®

NOTE 2: SUBSTRATES WITH A REINFORCING MESH WITHIN A DEPTH OF 5MM FROM THE SURFACE OF THE SUBSTRATE ARE UNABLE TO ACCEPT A TRM TERMINATION GROOVE

Section

Scale 1:2

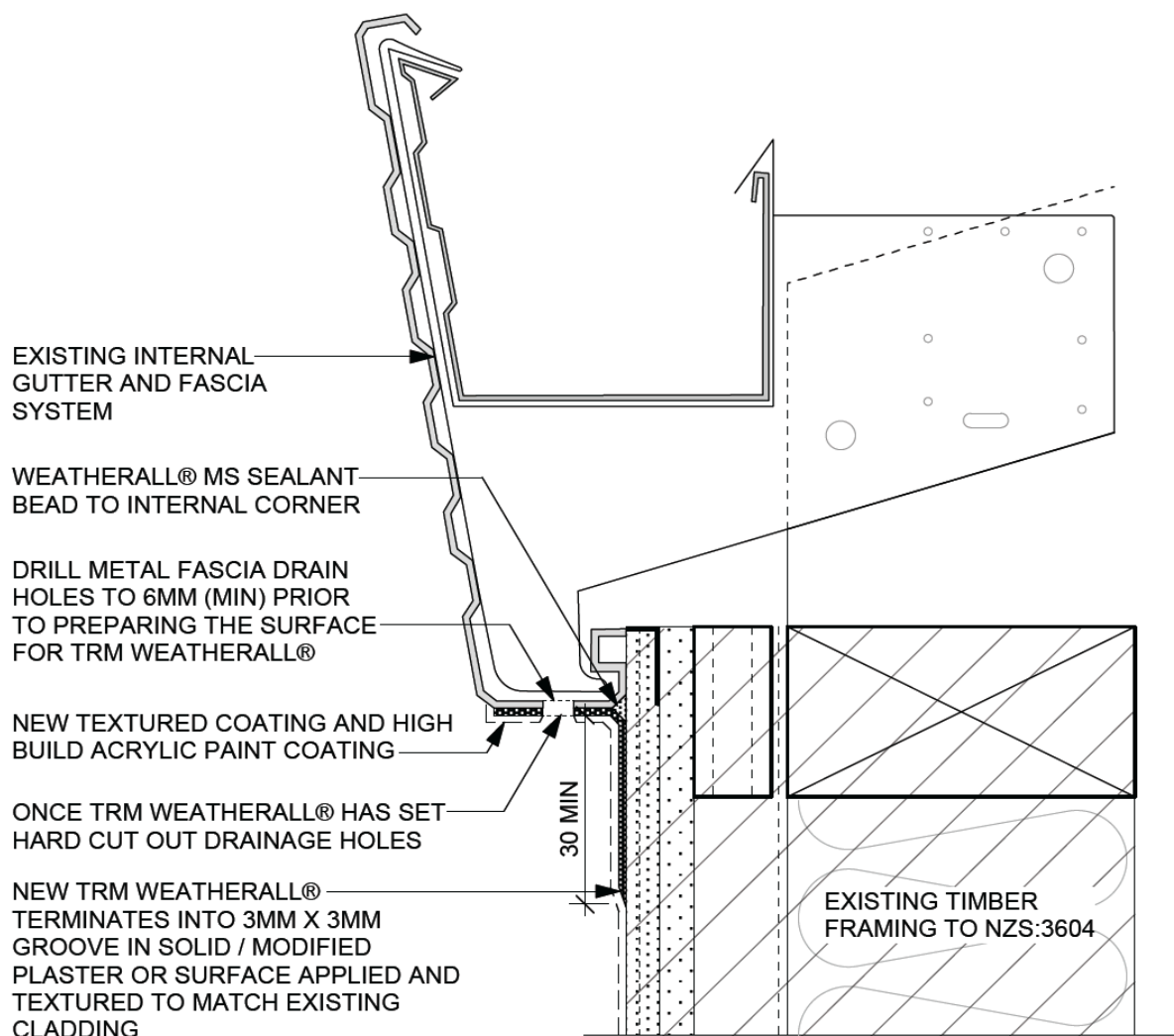
**TRM WEATHERALL®
TEXTILE REINFORCED
MEMBRANE SYSTEM**

**TYPICAL EXTENSION TO BASE OF
CLADDING**

TRM-16

DECEMBER 2015

The information contained in this detail is based on our experience and testing and represents the latest information available at the date of issue. This detail is intended for the use of design professionals and authorised users of TRM WeatherAll® products to assist in the development of specific project details to be used in conjunction with a TRM WeatherAll® specification. We reserve the right to alter or update information at any time without prior notice. It is the responsibility of a suitably qualified specifier, owner's agent, and /or the project manager to insure that they have the current TRM WeatherAll® details and specifications.



NOTE 1: GRIND TEXTURED PEAKS FROM EXISTING PLASTERED SURFACE TO PROVIDE KEY FOR TRM WEATHERALL®

NOTE 2: SUBSTRATES WITH A REINFORCING MESH WITHIN A DEPTH OF 5MM FROM THE SURFACE OF THE SUBSTRATE ARE UNABLE TO ACCEPT A TRM TERMINATION GROOVE

Section

Scale 1:2

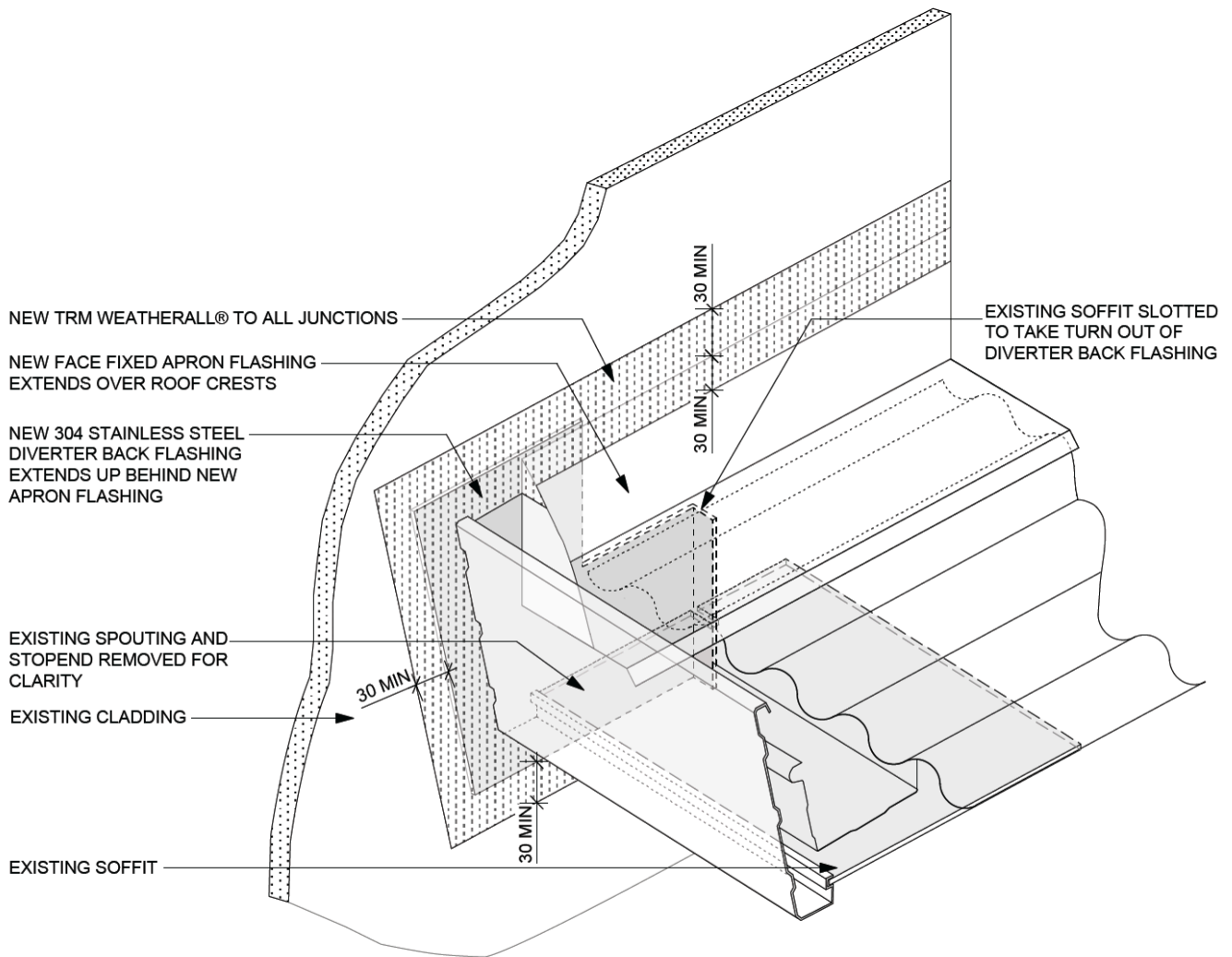
**TRM WEATHERALL®
TEXTILE REINFORCED
MEMBRANE SYSTEM**

**TYPICAL EXISTING METAL FASCIA TO
PLASTER JUNCTION**

TRM-17

DECEMBER 2015

The information contained in this detail is based on our experience and testing and represents the latest information available at the date of issue. This detail is intended for the use of design professionals and authorised users of TRM WeatherAll® products to assist in the development of specific project details to be used in conjunction with a TRM WeatherAll® specification. We reserve the right to alter or update information at any time without prior notice. It is the responsibility of a suitably qualified specifier, owner's agent, and /or the project manager to insure that they have the current TRM WeatherAll® details and specifications.



NOTE 1: GRIND TEXTURED PEAKS FROM EXISTING PLASTERED SURFACE TO PROVIDE KEY FOR TRM WEATHERALL®

NOTE 2: SUBSTRATES WITH A REINFORCING MESH WITHIN A DEPTH OF 5MM FROM THE SURFACE OF THE SUBSTRATE ARE UNABLE TO ACCEPT A TRM TERMINATION GROOVE

Isometric

Scale 1:2

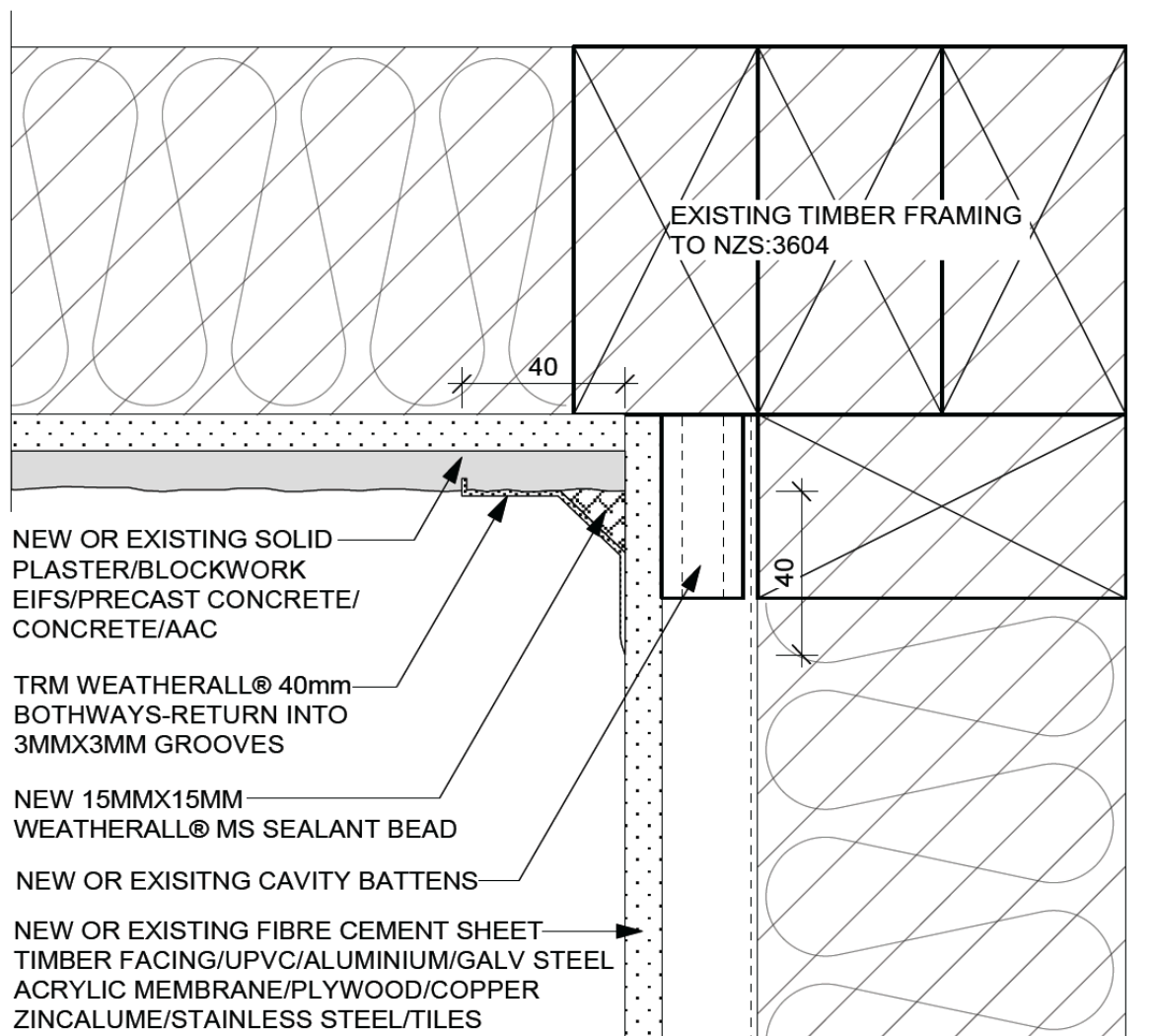
**TRM WEATHERALL®
TEXTILE REINFORCED
MEMBRANE SYSTEM**

TYPICAL DIVERTER FLASHING

TRM-18

DECEMBER 2015

The information contained in this detail is based on our experience and testing and represents the latest information available at the date of issue. This detail is intended for the use of design professionals and authorised users of TRM WeatherAll® products to assist in the development of specific project details to be used in conjunction with a TRM WeatherAll® specification. We reserve the right to alter or update information at any time without prior notice. It is the responsibility of a suitably qualified specifier, owner's agent, and /or the project manager to insure that they have the current TRM WeatherAll® details and specifications.



NOTE 1: GRIND TEXTURED PEAKS FROM EXISTING PLASTERED
SURFACE TO PROVIDE KEY FOR TRM WEATHERALL®

NOTE 2: SUBSTRATES WITH A REINFORCING MESH WITHIN A DEPTH
OF 5MM FROM THE SURFACE OF THE SUBSTRATE ARE
UNABLE TO ACCEPT A TRM TERMINATION GROOVE

Plan View

Scale 1:2

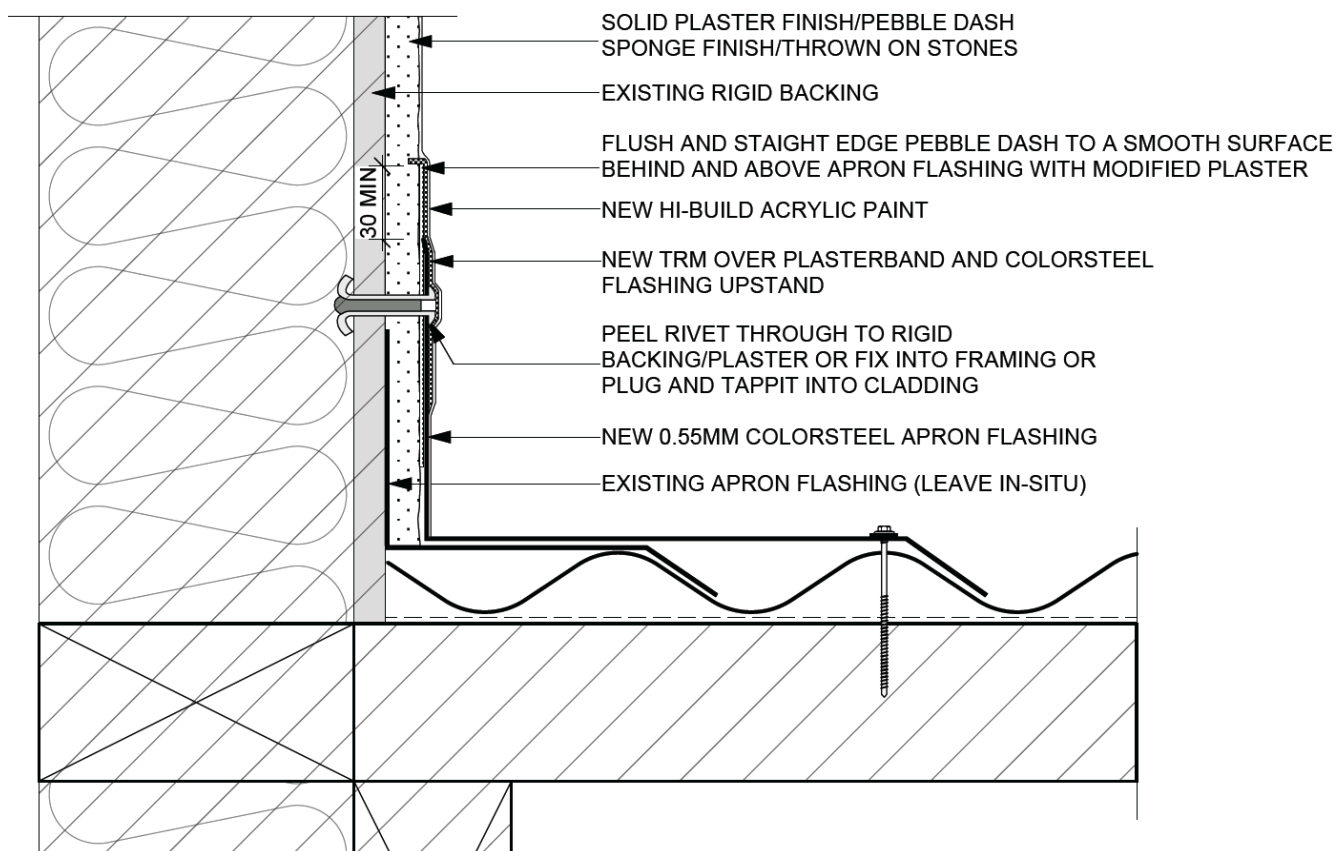
**TRM WEATHERALL®
TEXTILE REINFORCED
MEMBRANE SYSTEM**

**TYPICAL CLADDING TO CLADDING
JUNCTION**

TRM-19

DECEMBER 2015

The information contained in this detail is based on our experience and testing and represents the latest information available at the date of issue. This detail is intended for the use of design professionals and authorised users of TRM WeatherAll® products to assist in the development of specific project details to be used in conjunction with a TRM WeatherAll® specification. We reserve the right to alter or update information at any time without prior notice. It is the responsibility of a suitably qualified specifier, owner's agent, and/or the project manager to insure that they have the current TRM WeatherAll® details and specifications.



NOTE 1: GRIND TEXTURED PEAKS FROM EXISTING PLASTERED SURFACE TO PROVIDE KEY FOR TRM WEATHERALL®

NOTE 2: SUBSTRATES WITH A REINFORCING MESH WITHIN A DEPTH OF 5MM FROM THE SURFACE OF THE SUBSTRATE ARE UNABLE TO ACCEPT A TRM TERMINATION GROOVE

Section

Scale 1:2

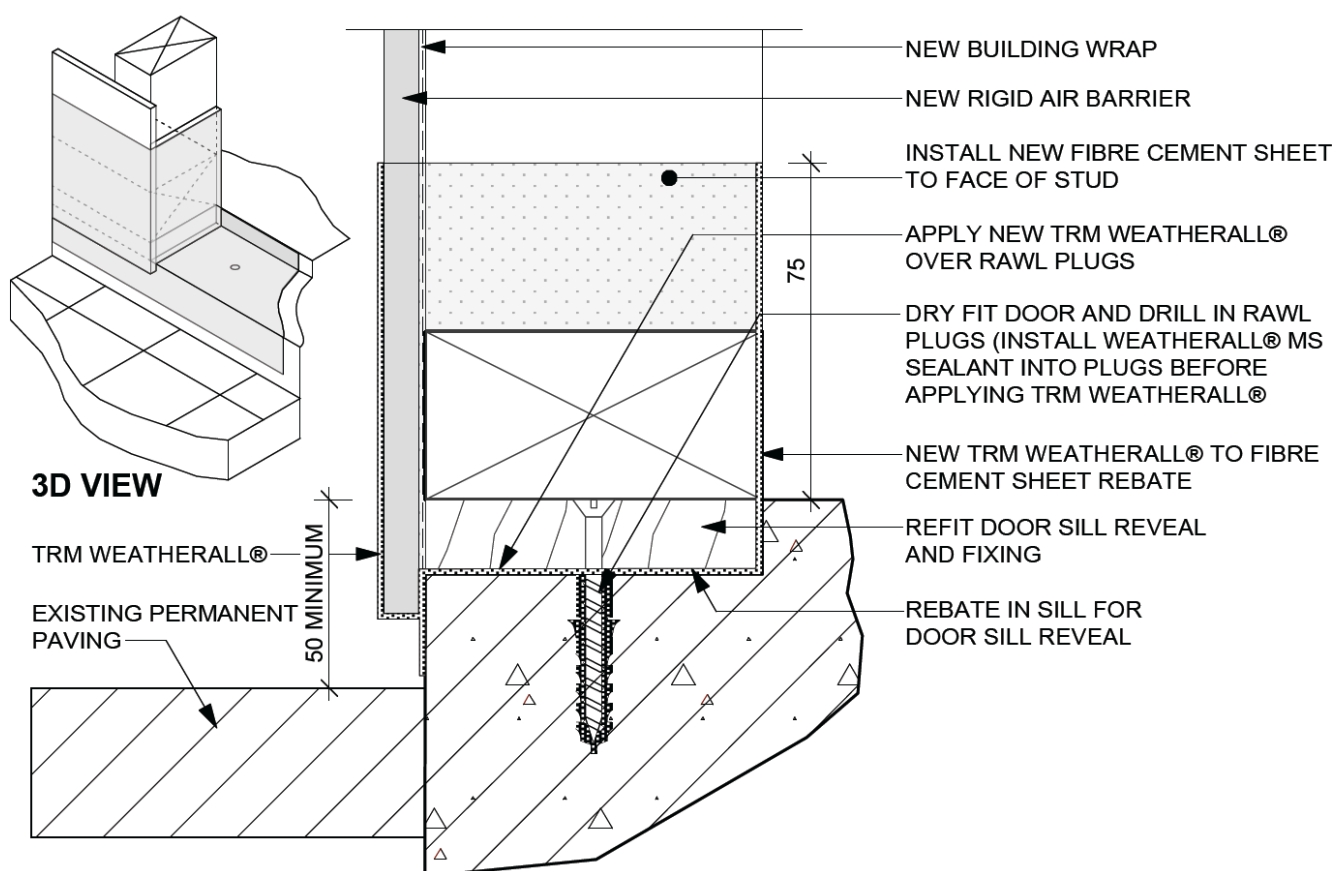
**TRM WEATHERALL®
TEXTILE REINFORCED
MEMBRANE SYSTEM**

**TYPICAL FACE FIXED RETRO-FITTED
APRON FLASHING**

TRM-20

DECEMBER 2015

The information contained in this detail is based on our experience and testing and represents the latest information available at the date of issue. This detail is intended for the use of design professionals and authorised users of TRM WeatherAll® products to assist in the development of specific project details to be used in conjunction with a TRM WeatherAll® specification. We reserve the right to alter or update information at any time without prior notice. It is the responsibility of a suitably qualified specifier, owner's agent, and/or the project manager to insure that they have the current TRM WeatherAll® details and specifications.



NOTE 1: GRIND TEXTURED PEAKS FROM EXISTING PLASTERED SURFACE TO PROVIDE KEY FOR TRM WEATHERALL®

NOTE 2: SUBSTRATES WITH A REINFORCING MESH WITHIN A DEPTH OF 5MM FROM THE SURFACE OF THE SUBSTRATE ARE UNABLE TO ACCEPT A TRM TERMINATION GROOVE

Section

Scale 1:2

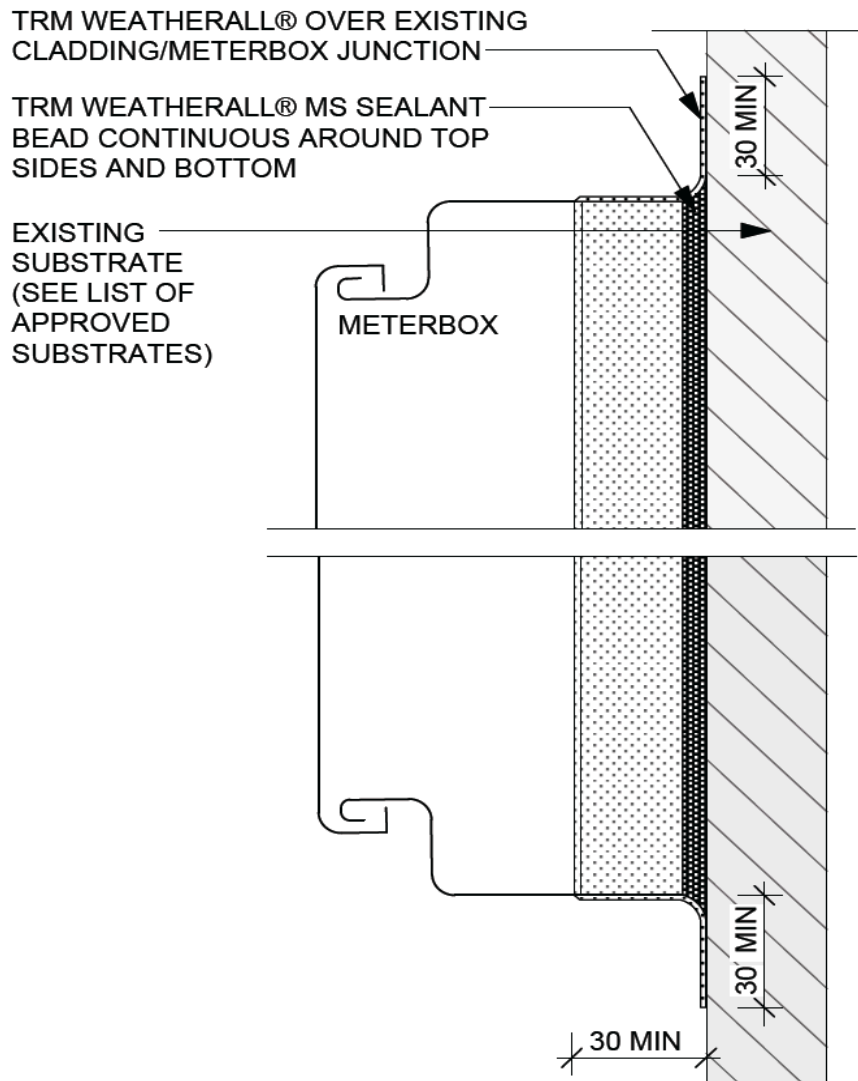
**TRM WEATHERALL®
TEXTILE REINFORCED
MEMBRANE SYSTEM**

**TYPICAL LOW FINISHED FLOOR
LEVEL HEIGHT**

TRM-21

DECEMBER 2015

The information contained in this detail is based on our experience and testing and represents the latest information available at the date of issue. This detail is intended for the use of design professionals and authorised users of TRM WeatherAll® products to assist in the development of specific project details to be used in conjunction with a TRM WeatherAll® specification. We reserve the right to alter or update information at any time without prior notice. It is the responsibility of a suitably qualified specifier, owner's agent, and/or the project manager to insure that they have the current TRM WeatherAll® details and specifications.



NOTE 1: GRIND TEXTURED PEAKS FROM EXISTING PLASTERED SURFACE TO PROVIDE KEY FOR TRM WEATHERALL®

NOTE 2: SUBSTRATES WITH A REINFORCING MESH WITHIN A DEPTH OF 5MM FROM THE SURFACE OF THE SUBSTRATE ARE UNABLE TO ACCEPT A TRM TERMINATION GROOVE

Section

Not to Scale

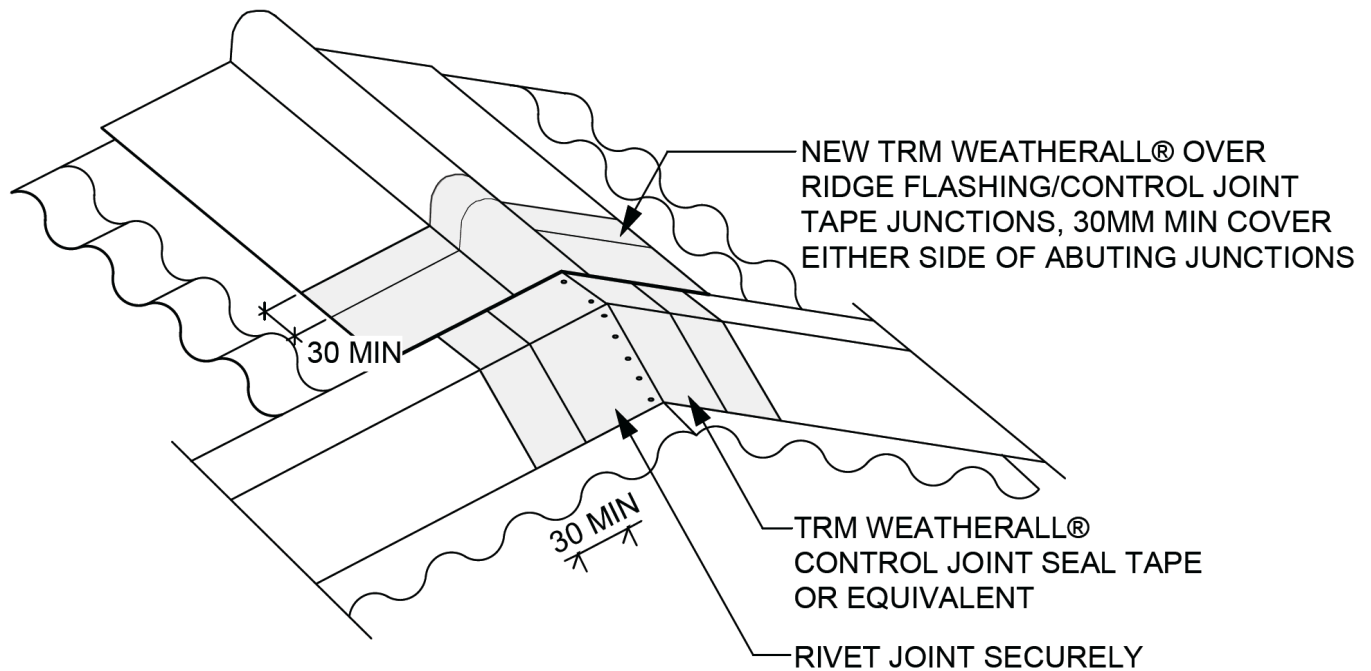
**TRM WEATHERALL®
TEXTILE REINFORCED
MEMBRANE SYSTEM**

TYPICAL METERBOX

TRM-22

DECEMBER 2015

The information contained in this detail is based on our experience and testing and represents the latest information available at the date of issue. This detail is intended for the use of design professionals and authorised users of TRM WeatherAll® products to assist in the development of specific project details to be used in conjunction with a TRM WeatherAll® specification. We reserve the right to alter or update information at any time without prior notice. It is the responsibility of a suitably qualified specifier, owner's agent, and/or the project manager to insure that they have the current TRM WeatherAll® details and specifications.



Isometric

Not to Scale

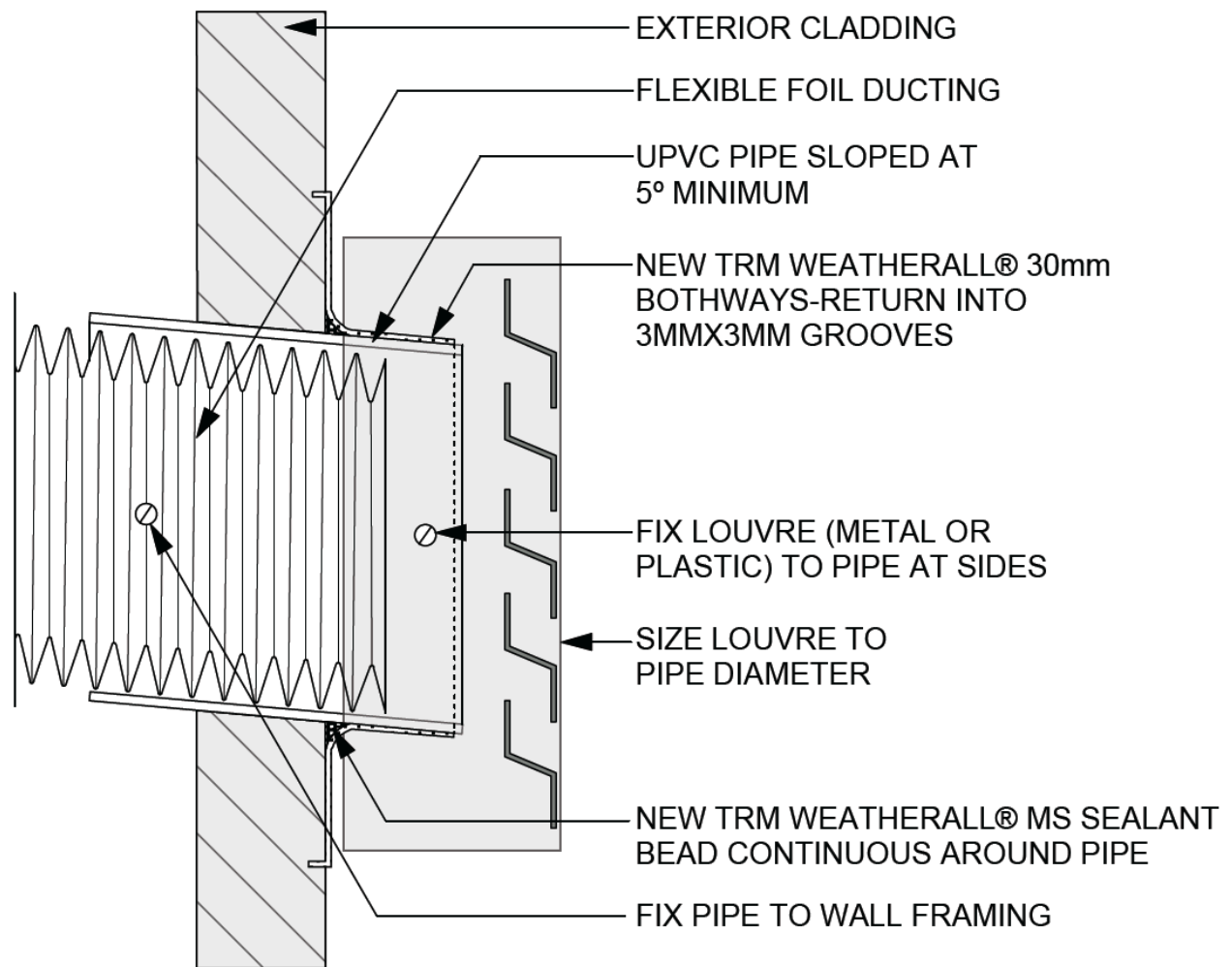
**TRM WEATHERALL®
TEXTILE REINFORCED
MEMBRANE SYSTEM**

TYPICAL RIDGE CAP AND IN PLANE FLASHING JUNCTION

TRM-23

DECEMBER 2015

The information contained in this detail is based on our experience and testing and represents the latest information available at the date of issue. This detail is intended for the use of design professionals and authorised users of TRM WeatherAll® products to assist in the development of specific project details to be used in conjunction with a TRM WeatherAll® specification. We reserve the right to alter or update information at any time without prior notice. It is the responsibility of a suitably qualified specifier, owner's agent, and/or the project manager to insure that they have the current TRM WeatherAll® details and specifications.



NOTE 1: GRIND TEXTURED PEAKS FROM EXISTING PLASTERED SURFACE TO PROVIDE KEY FOR TRM WEATHERALL®

NOTE 2: SUBSTRATES WITH A REINFORCING MESH WITHIN A DEPTH OF 5MM FROM THE SURFACE OF THE SUBSTRATE ARE UNABLE TO ACCEPT A TRM TERMINATION GROOVE

Section

Not to Scale

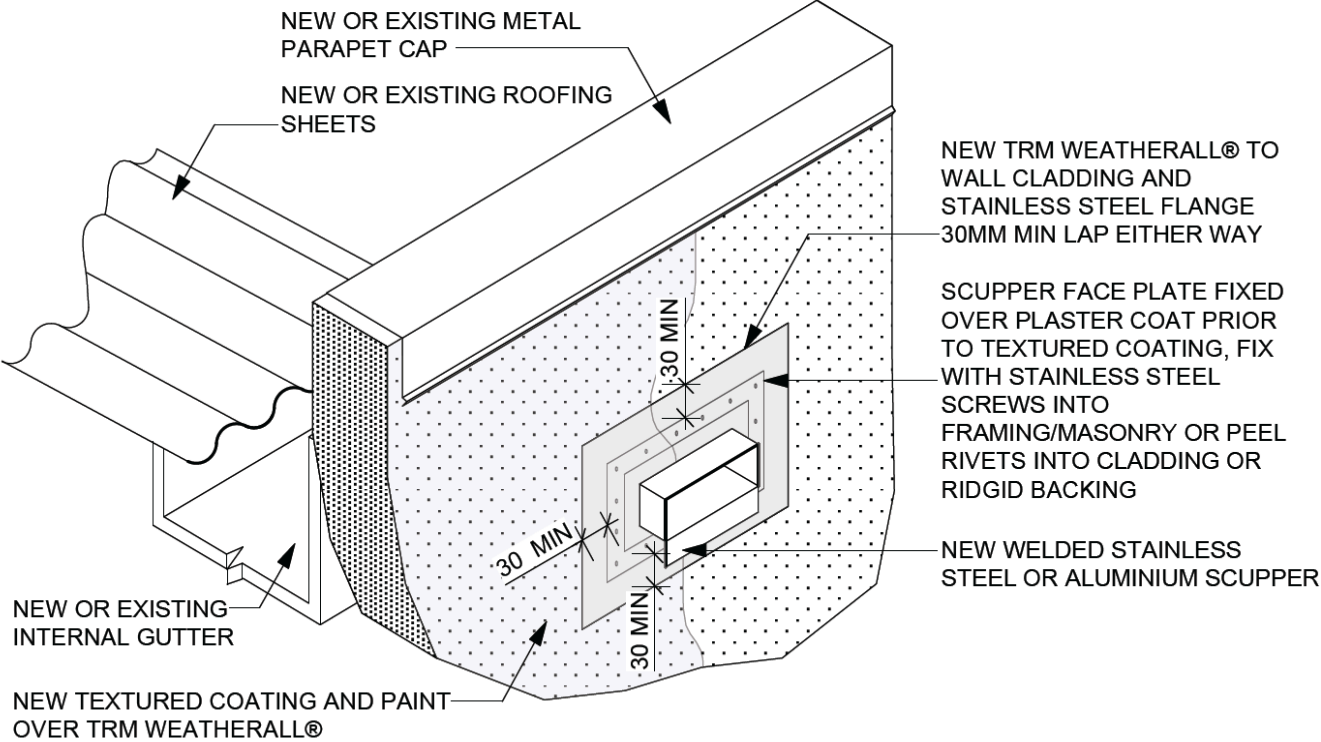
**TRM WEATHERALL®
TEXTILE REINFORCED
MEMBRANE SYSTEM**

TYPICAL EXHAUST VENT DETAIL

TRM-24

DECEMBER 2015

The information contained in this detail is based on our experience and testing and represents the latest information available at the date of issue. This detail is intended for the use of design professionals and authorised users of TRM WeatherAll® products to assist in the development of specific project details to be used in conjunction with a TRM WeatherAll® specification. We reserve the right to alter or update information at any time without prior notice. It is the responsibility of a suitably qualified specifier, owner's agent, and/or the project manager to insure that they have the current TRM WeatherAll® details and specifications.



NOTE 1: GRIND TEXTURED PEAKS FROM EXISTING PLASTERED SURFACE TO PROVIDE KEY FOR TRM WEATHERALL®

NOTE 2: SUBSTRATES WITH A REINFORCING MESH WITHIN A DEPTH OF 5MM FROM THE SURFACE OF THE SUBSTRATE ARE UNABLE TO ACCEPT A TRM TERMINATION GROOVE

Isometric

Not to Scale

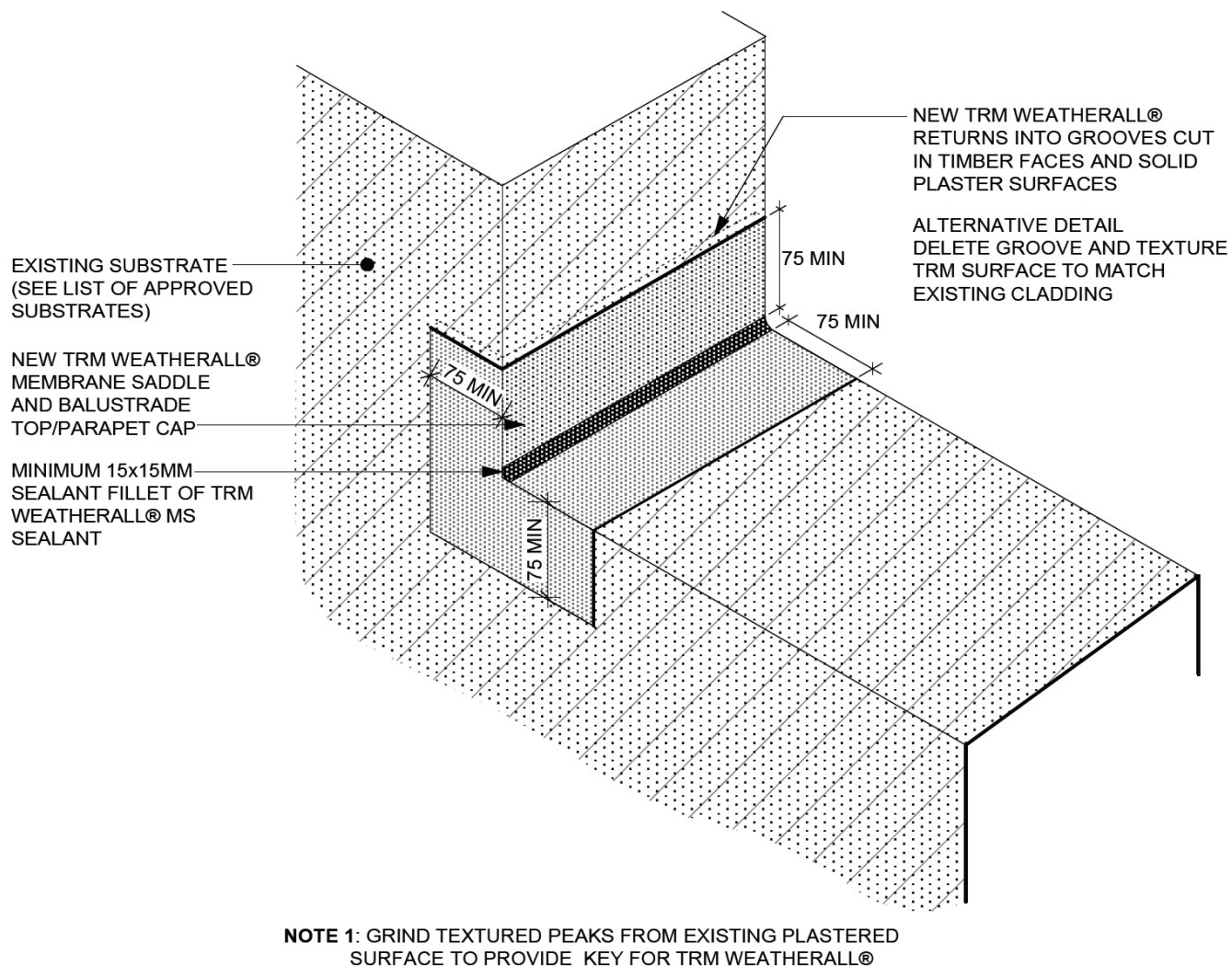
**TRM WEATHERALL®
TEXTILE REINFORCED
MEMBRANE SYSTEM**

TYPICAL SCUPPER DETAIL

TRM-25

DECEMBER 2015

The information contained in this detail is based on our experience and testing and represents the latest information available at the date of issue. This detail is intended for the use of design professionals and authorised users of TRM WeatherAll® products to assist in the development of specific project details to be used in conjunction with a TRM WeatherAll® specification. We reserve the right to alter or update information at any time without prior notice. It is the responsibility of a suitably qualified specifier, owner's agent, and/or the project manager to insure that they have the current TRM WeatherAll® details and specifications.



Isometric

Not to Scale

**TRM WEATHERALL®
TEXTILE REINFORCED
MEMBRANE SYSTEM**

TYPICAL OVERLAY SADDLE FLASHING

TRM-26**DECEMBER 2015**

The information contained in this detail is based on our experience and testing and represents the latest information available at the date of issue. This detail is intended for the use of design professionals and authorised users of TRM WeatherAll® products to assist in the development of specific project details to be used in conjunction with a TRM WeatherAll® specification. We reserve the right to alter or update information at any time without prior notice. It is the responsibility of a suitably qualified specifier, owner's agent, and /or the project manager to insure that they have the current TRM WeatherAll® details and specifications.